

**BIM.archiproducts®**



# LUCEPLAN BIM PRODUCTS - CONTENTS AND USER MANUAL

## Authoring Software Autodesk Revit 2017

---

This document provides information on the contents and the correct use of the BIM files in Revit format produced by LUCEPLAN.

### File name and definition

The BIM product is contained in the .rfa format file "LUCEPLAN\_Product Name"; the native file is created with the BIM authoring software Autodesk Revit 2017.

In addition to the object file, the company's information sheet (schedule) is provided. The information sheet, in .rvt format, contains information regarding the LUCEPLAN product. This can be used to calculate the quantities and verify the characteristics of the product with regard to aesthetics, dimensions, physical appearance and performance.

The information sheet has been divided into three categories: **Identity data Dimensions, Materials and finishes, Photometrics and electrical.**

Other alphanumeric information about the product can be found in the object's properties sheet.

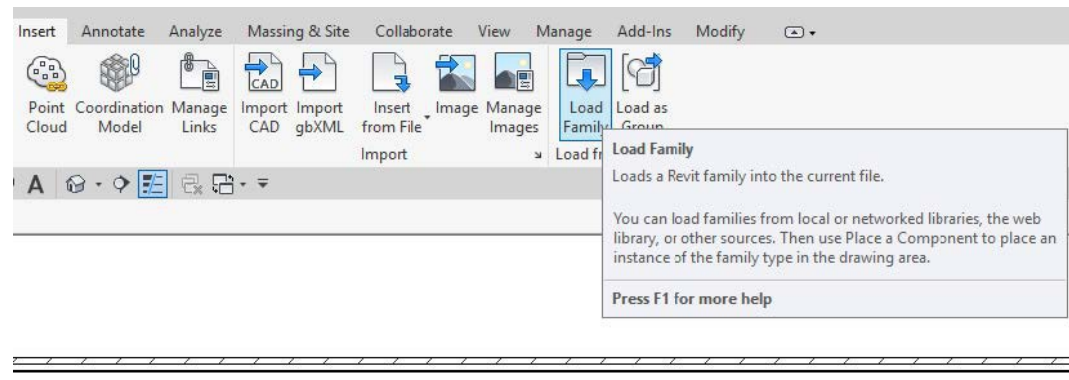
The designer/manufacturer who uses the LUCEPLAN BIM content can calculate the quantities of the products used in his/her project, manage the quantities for the purchase order and transfer the information relating to the product used to those carrying out the work.

*The product shown in this user guide is used as an example.*

## How to use LUCEPLAN BIM content

Download and save the LUCEPLAN .rfa objects in your personal library, then upload the BIM family to your project.

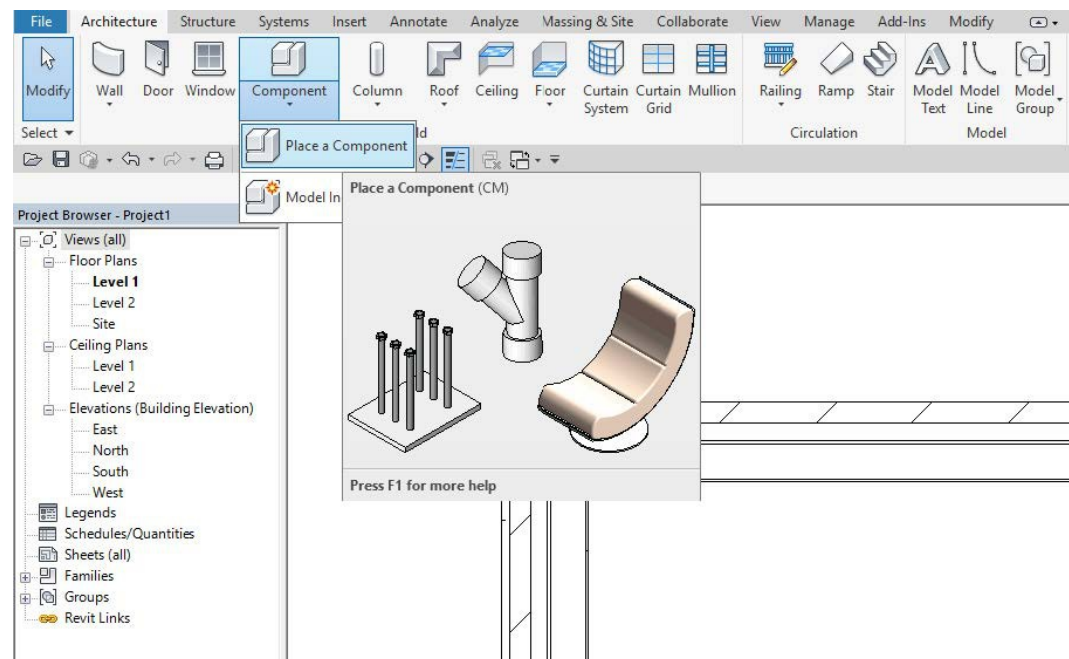
### Load Family



## Component positioning

Open any plan view and insert the desired LUCEPLAN product using the **Component** command -> **Place a component** and positioning it within the project.

### Place a component



If you find a .txt file in the download file, archive it in the same location as the .rfa file.

The .txt file contains the parameters and the respective values used to create the different types of a given family.

The .txt file includes the type catalogue. By using the type catalogue, it is possible to select and load only the desired types for your personal project, thus slimming down the project file.

---

#### Type catalogue

Type	Wattage Comments	Wattage
	(all) ▼	(all)
D79/90C_DIFFUSER_light grey	3 x max 30W LED	15.00 W
D79/120C_DIFFUSER_light grey	3 x max 30W LED	30.00 W
D79/150C_DIFFUSER_light grey	3 x max 30W LED	15.00 W

Refer to the technical parameters sheet for assistance in choosing the correct product.

## Material Library

For a storage and backup purpose there is a material library named **LUCEPLAN\_MATERIAL\_LIBRARY.adsklib** which contain all used material and texture maps. For properly display of graphic assets please download and unzip **LUCEPLAN\_MATERIAL\_LIBRARY.zip** archive.

If the texture mapping should be missing, it can be linked again via the Appearance tab. In the Generic menu, load the diffuse image and/or bump file.

## Particular use

Referring to some of LUCEPLAN pendant light there is a CORD\_LENGTH parameter to set the cord length; this kind of parameter has a minimum/maximum length that correct the eventual oversize.

In some cases there is a selection of illumination photometric .ies curve that can be used. For more information please refer to technical sheet.

Photometrics	
ILLUMINITECHNICAL PERFORMANCE	LED 32W 2700K - CRI 90+
Color Filter	White
Dimming Lamp Color Temperature Shift	<None>
Emit Shape Visible in Rendering	<input type="checkbox"/>
Emit from Circle Diameter	0.6096
Initial Color	2700 K
Initial Intensity	15.00 W @ 148.54 lm/W
Light Loss Factor	1
Photometric Web File	Farel D96_Diffuser White.ies
Tilt Angle	-90.00°
COLOR RENDERING INDEX	>90
Light Source Definition (family)	Circle+Photometric Web
Other	

## Level Of Geometry (LOG)

The object was created with three levels of geometric development visible in plan, elevation and section. In the **Coarse** level view, a simple 2D shape can be seen; the **Medium** level shows the overall geometric footprint; the **Fine** level shows the simplified shape of the product with fewer details.

LOG representation



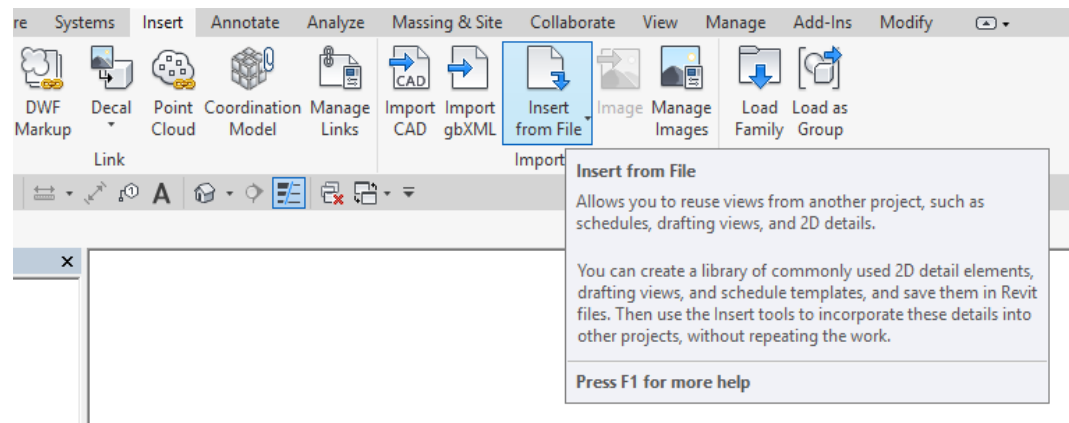
## Schedule entry

In addition to the object file, the company's information sheet (schedule) is named **LUCEPLAN\_Lighting\_Fixture\_Schedule.rvt**. The information sheet contains information in .rvt format about the products, including the identity, dimensional and technical parameters, which can be used to calculate the quantities and verify the product's physical and performance characteristics.

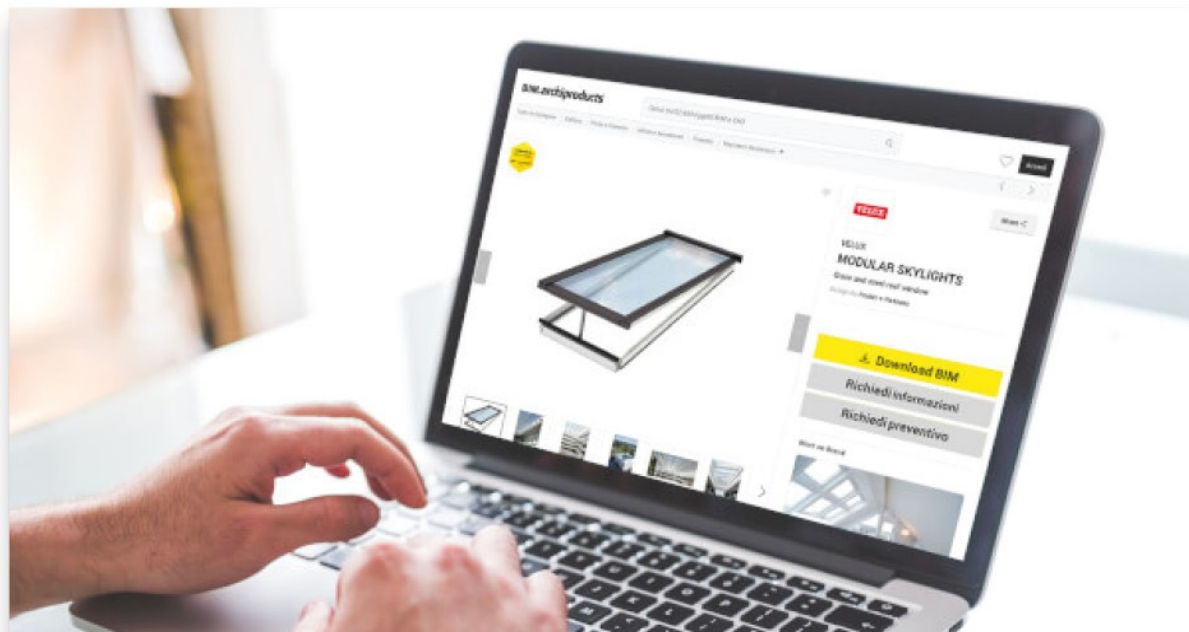
The designer/manufacturer who uses the BIM content can calculate the quantities of the products used in his/her project, manage the quantities for the purchase order and transfer the information relating to the product used to those carrying out the work.

---

### Load schedule



# BIM.archiproducts®



**Browse and download BIM files for top products**  
**Search for a product, filter by file format**  
**or choose a category**

**DOWNLOAD BIMS NOW**



## **BIM.ARCHIPRODUCTS CERTIFICATION**

All objects made by our team are recognizable thanks to the  
"Certified by BIM.archiproducts" badge.

BIM.archiproducts®

**Write us at [infobim@archiproducts.com](mailto:infobim@archiproducts.com)  
or call at +39 080-2460421**



[bim.archiproducts.com](http://bim.archiproducts.com)

**THE ARCHITECTURE  
& DESIGN NETWORK**  
—  
*archipassport*

**edilportale® archiportale® archiproducts® BIM.archiproducts® archilovers® © sayduck**

Archipassport | Edilportale | Archiportale | Archiproducts | BIM.archiproducts | Archilovers sono marchi registrati da Edilportale.com Spa. © Copyright 2018 Edilportale.com Spa | Via Loliacono, 20 - 70126 Bari, Italia - tl. +39 080 24 60 421 | fax +39 080 99 95 130

**BIM.archiproducts**